



Wiser KNX App

For sustainable and smart homes

se.com



Life Is On

Schneider
Electric

Table of contents

It's time for a Wiser KNX home

1

Unlock the full potential of your Wiser KNX living space

Discover the new Wiser KNX app

2

Designed around your needs

Energy management

3

Reduce your energy bill and carbon footprint

Future-proof and long lasting

4

Choose a durable solution



It's time to choose a Wiser home

As more homes become connected and the world increasingly relies on electricity, it's expected that global energy consumption will double by 2050.

Schneider Electric's vision for the sustainable, connected home of the future enables every device to be easily controlled and personalized through the Wiser KNX app ensuring your home is not just smart but also sustainable.

SpaceLogic KNX product range and the new Wiser KNX app provide an intuitive system with the tools you need to control your electricity usage and optimize your energy needs, without sacrificing comfort.

Efficiency pays off

To achieve net-zero carbon emissions by 2050, as set out in the Paris Climate Accords, governments around the world are implementing new policies and laws. These local decarbonization initiatives often include subsidies for energy-efficiency improvements in buildings.

That's where Wiser KNX and its energy management capabilities come in.

20%
of the world's CO₂ emissions come from homes*

* Source: International Energy Agency



Unlock the full potential of your Wiser KNX livingospace

Save yourself stress, time, and money

From busy schedules and endless to-do lists to high energy bills, everyday life at home can get the best of you. Wiser is here to help you live more comfortably and more efficiently – with minimum effort.

The Wiser KNX smart home system is:



Designed for a customized experience...

...so you can maximize comfort at home with intuitive control.



Energy efficient...

...to help you reduce your energy bills and live more sustainably.



Future-proof and long-lasting...

...to create a durable solution that evolves with your needs.

Discover the Wiser KNX app

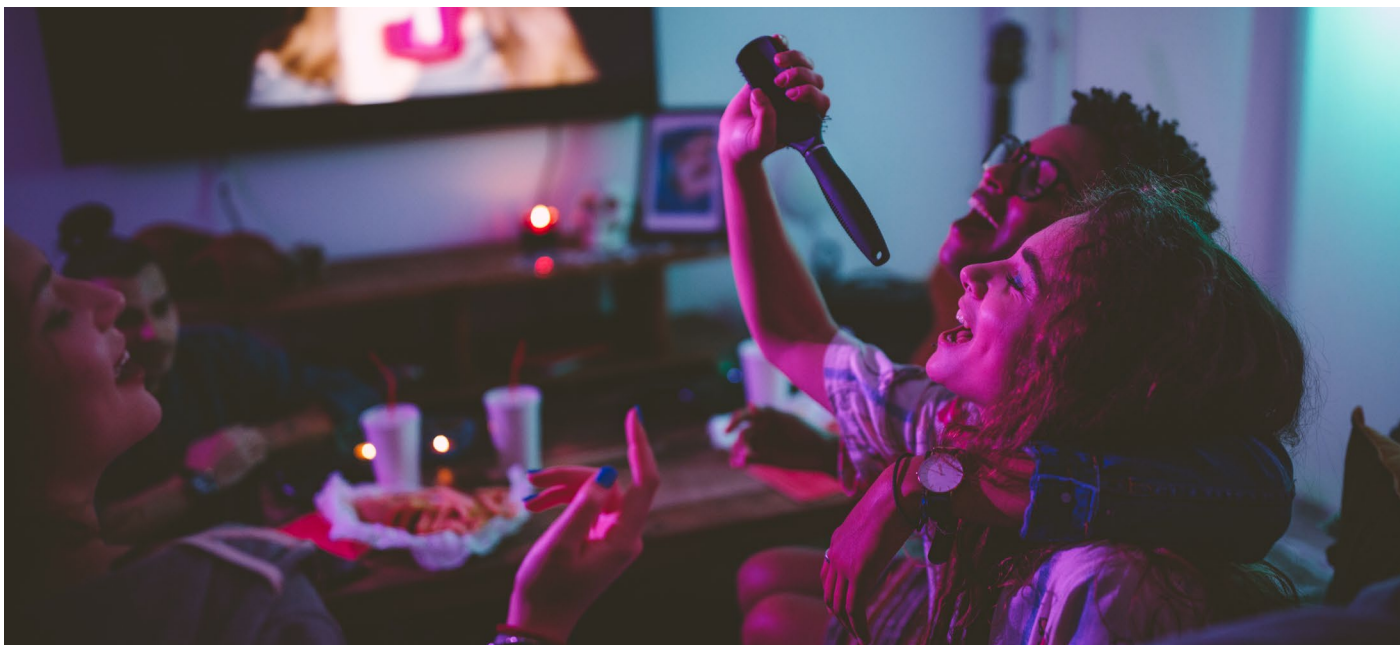
Wiser KNX app: Maximize comfort with intuitive control

You are controlling your Wiser KNX smart home manually, by automations or via voice control? Looking for a more convenient and personalized way to manage your smart home? The new Wiser KNX app answers to your needs and brings your smart home experience to a new level.



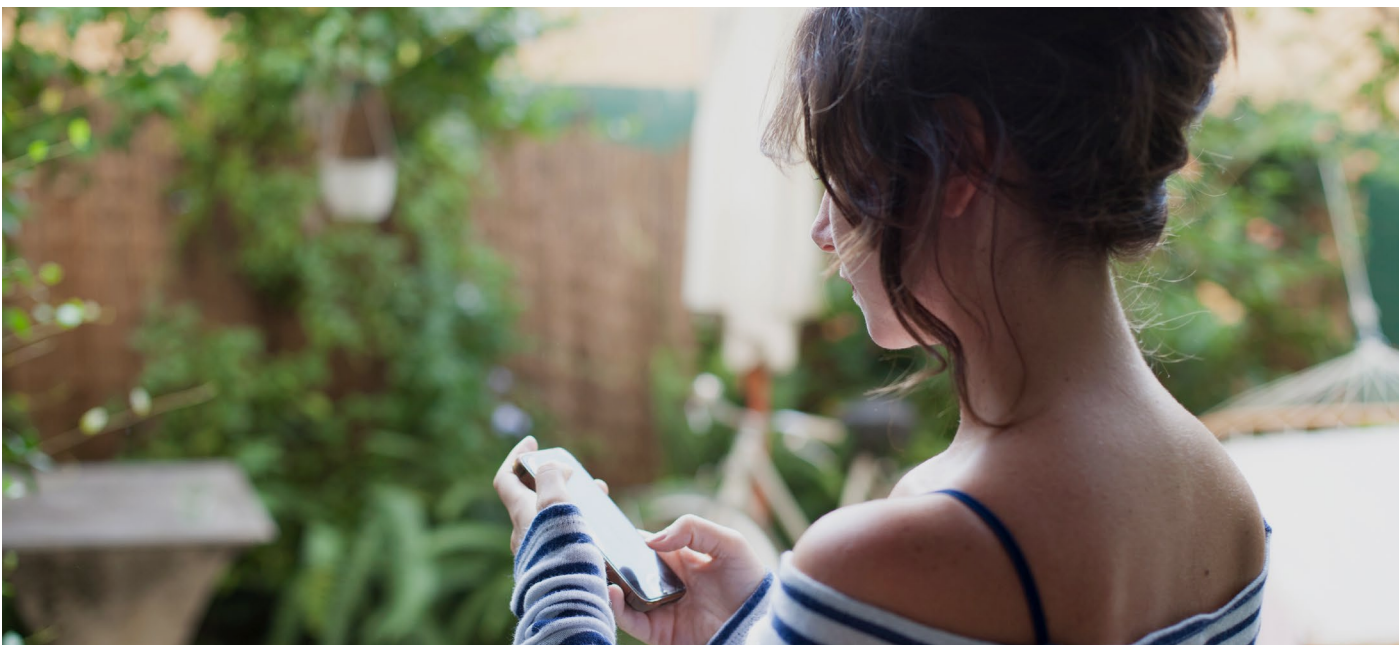
All-in-one app

The Wiser KNX app allows you to manage all your KNX functions, like energy, heating and cooling, safety, lighting, and shutters, directly from your smartphone. The app also includes simple access to the online user guide, consistently updated with the latest features.



Moment

Create personalized “Moments” for all kinds of scenarios and situations in your home. A “Moment” enables you to set a specific scene – for example a “Movie Moment” can dim the lights and close the shutters so you're ready for a movie night. You can activate it manually, or turn it on through an automation.



Notifications

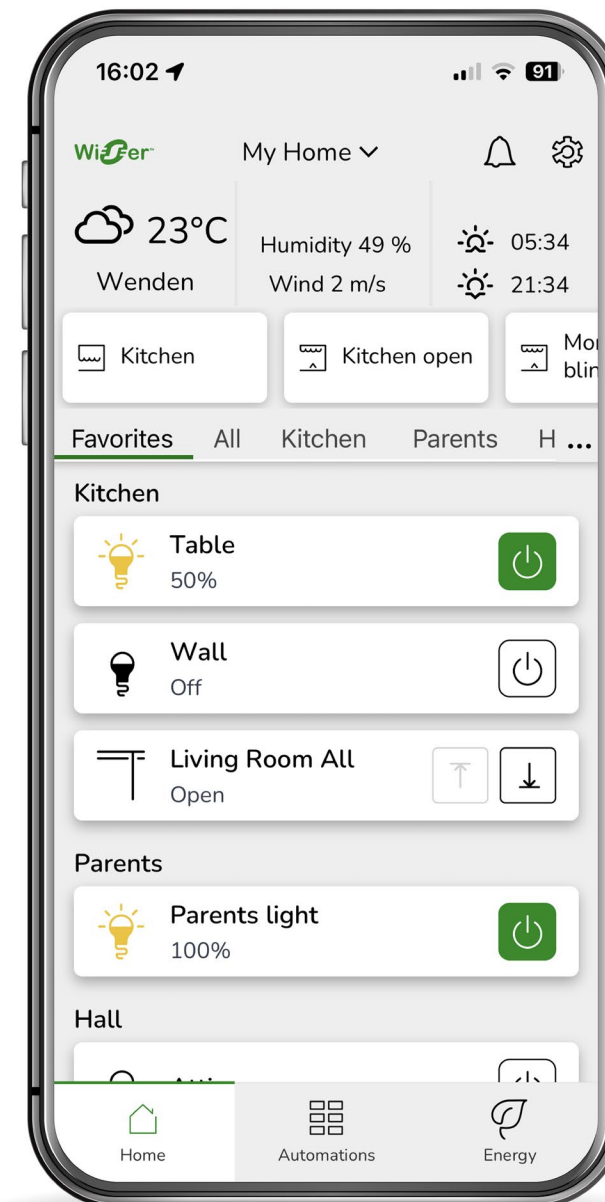
The Wiser KNX app notifies you of abnormal events such as high humidity, smoke, water leakage, unexpected motion, or unusually high energy use, so you can address the issues before they turn into costly emergencies.

Designed around your needs

The **Wiser KNX app** is the new user experience to make your KNX home more smart, sustainable, resilient and efficient.

With the new Wiser KNX app you control all KNX functions from anywhere you are:

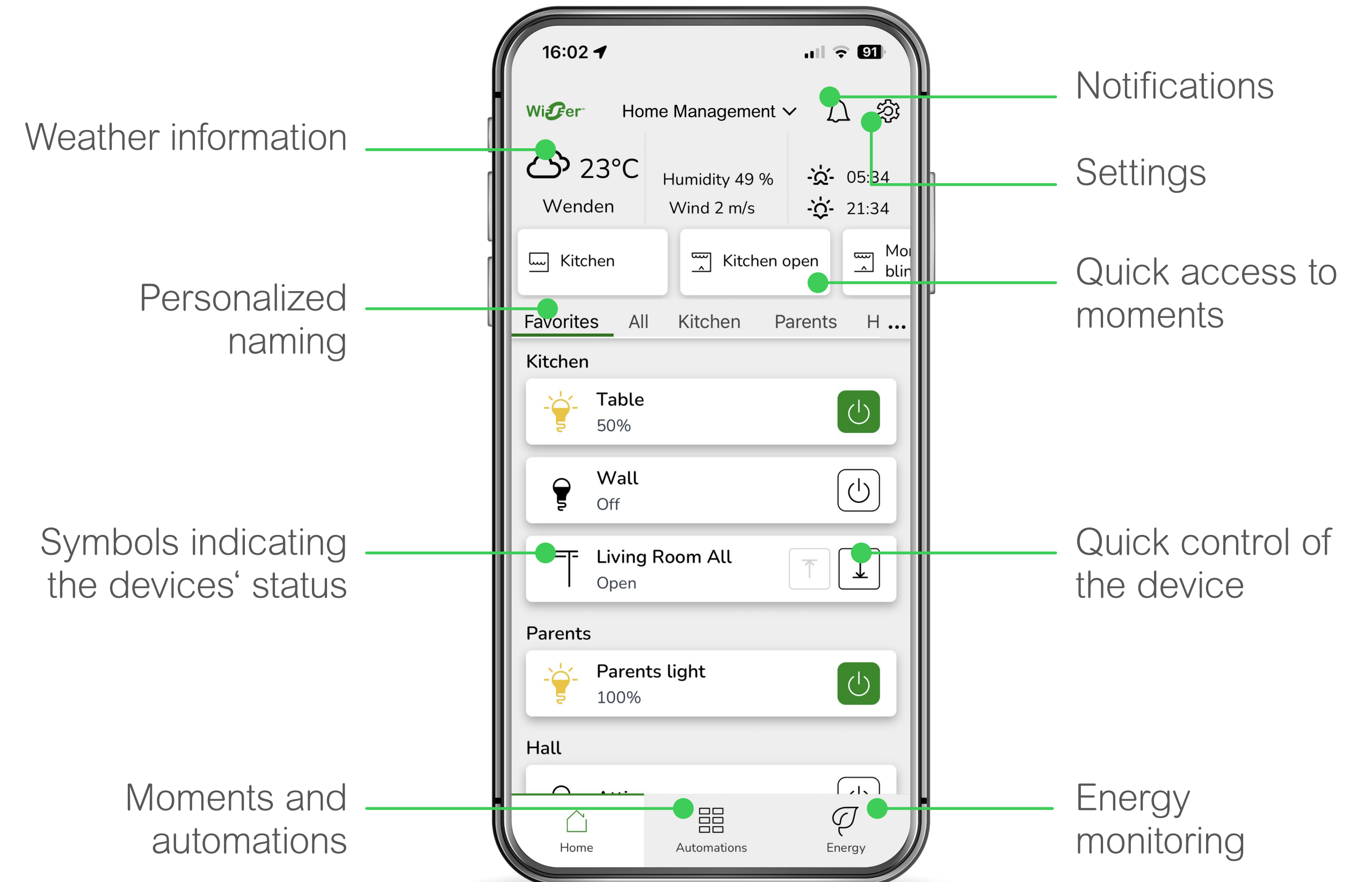
- Lights, blinds, heating, cooling, etc.
- Advanced schedules
- Moments (scenes) and automations
- Energy awareness
- EV support
- Device's notifications
- Home Management (multi-site)



Intuitive user interface

The Wiser KNX app brings your smart home experience to the fullest thanks to its simple, clear and intuitive design. It provides a clearly structured overview of all rooms, devices and moments.

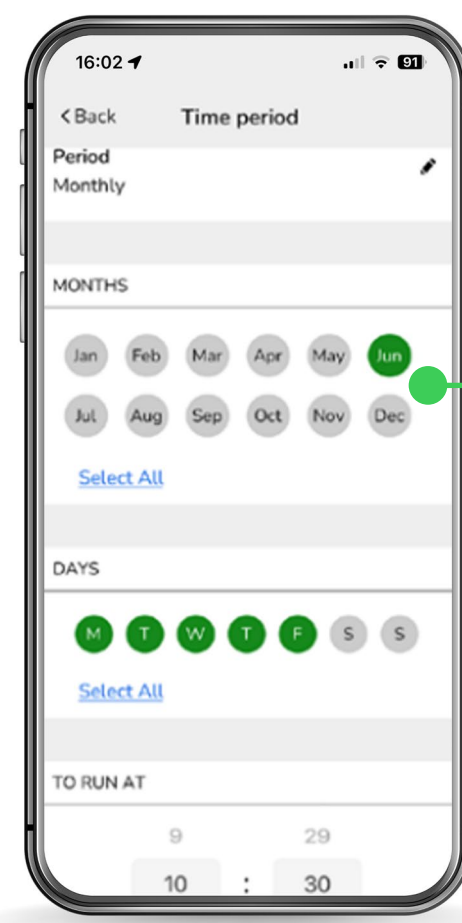
- All important functions in one view
- Bold symbols
- Clear layout
- Individual, personalized naming
- Quick access to your other homes



Easy operation and full personalization

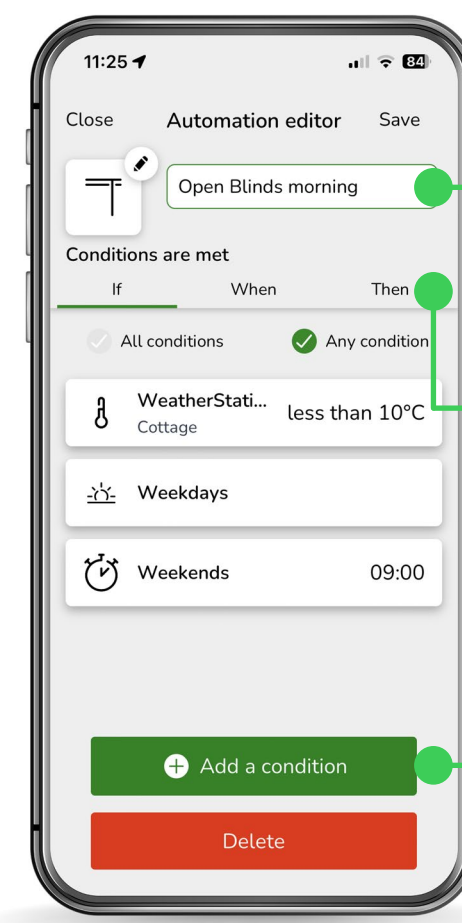
The Wiser KNX app delivers the flexibility you need to control your KNX devices, create schedules, moments or automations. All is fully aligned with your needs and personalized.

Advanced scheduling



Schedule per hour, day, month or year

Personalized moments and automations



- Create your custom automations
- Trigger multiple actions at once
- Add trigger conditions based on time, weather or device status change



Convince in control wherever you are

Effortlessly manage your home functions with
smart and mobile control.

Keep your home with you, even when you are not
at home. If something occurs during your absence,
you will immediately receive a notification on your
smartphone.

A glance at your Wiser KNX app quickly shows you
that all lights and standby devices are switched off,
the heating is set to an energy-saving temperature
and monitoring functions are activated.

Check if your PV system is generating enough
energy to avoid grid dependency during the day.

The Wiser KNX app gives you a feeling of total
confidence wherever you are.



Energy management

Reduce your energy bills and live more sustainably

With the Wiser KNX app, you have in-depth visibility of your energy consumption so you can use energy better and more efficiently.



Home energy management

Use energy insights to minimize your energy costs by taking advantage of the best electricity tariffs and avoiding exceeding your power usage limits.



Energy dashboard

Gain a clear view of how you use energy to make better-informed decisions, change your habits, and keep your budget under control.



Room-by-room temperature control

Adjust heating in every room individually, or turn it off while you're out via the Wiser KNX app to avoid wasting energy.



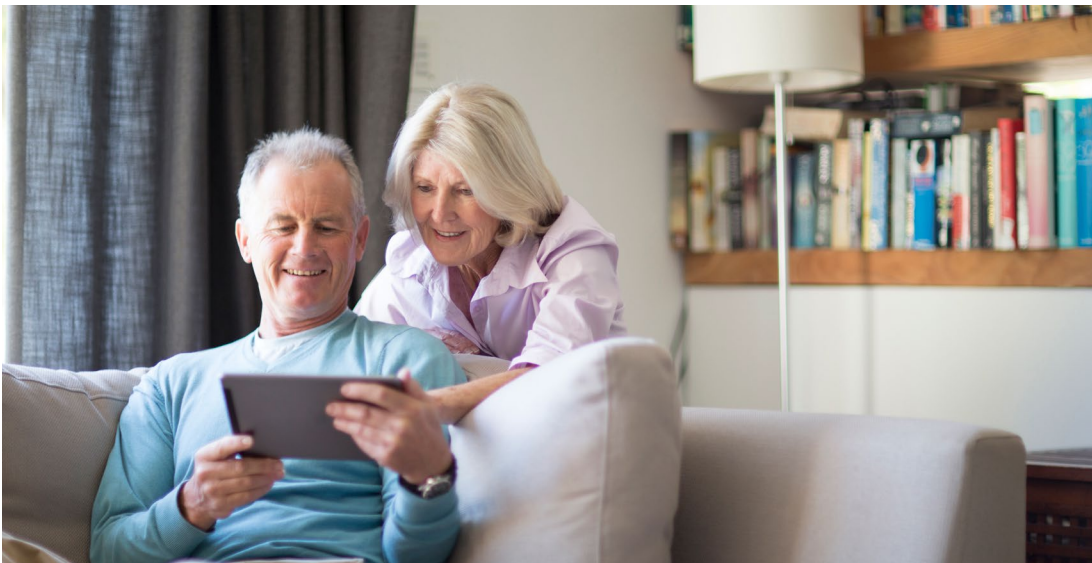
Moments and automations

Save energy with customizable pre-set actions. For example, set up the lights to switch off if no motion is sensed for a predefined time.



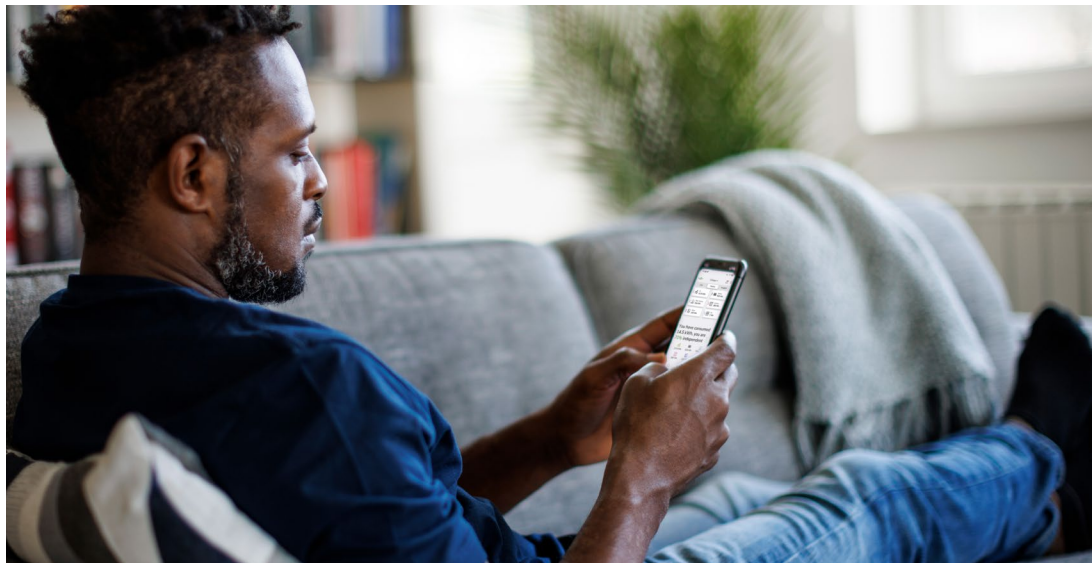
Keeping a close eye on energy consumption

With energy costs on the rise, knowing how you use energy is key to optimizing your bills. Wiser KNX app provides you with real-time information on electricity consumption and equipment status to help you maximize savings.



Understanding usage

On the Wiser energy dashboard, you can track in real time how much energy is being used by each device and how this usage translates into costs.



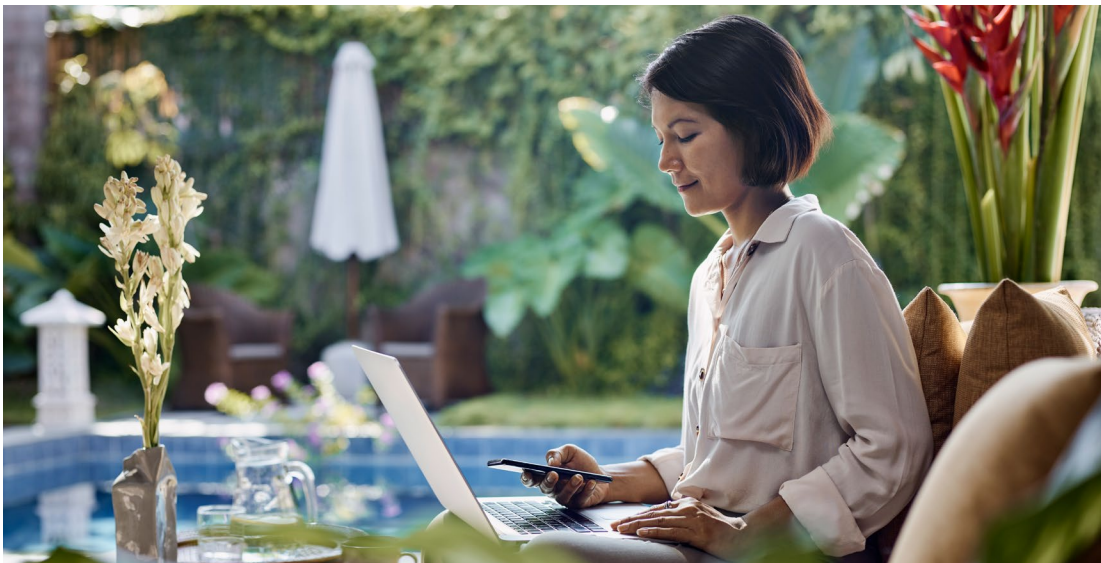
In the know

Get information on your grid dependency so you can take action to reduce it.



EV support

The Wiser KNX app lets you manage the charging of your EV from anywhere you are.



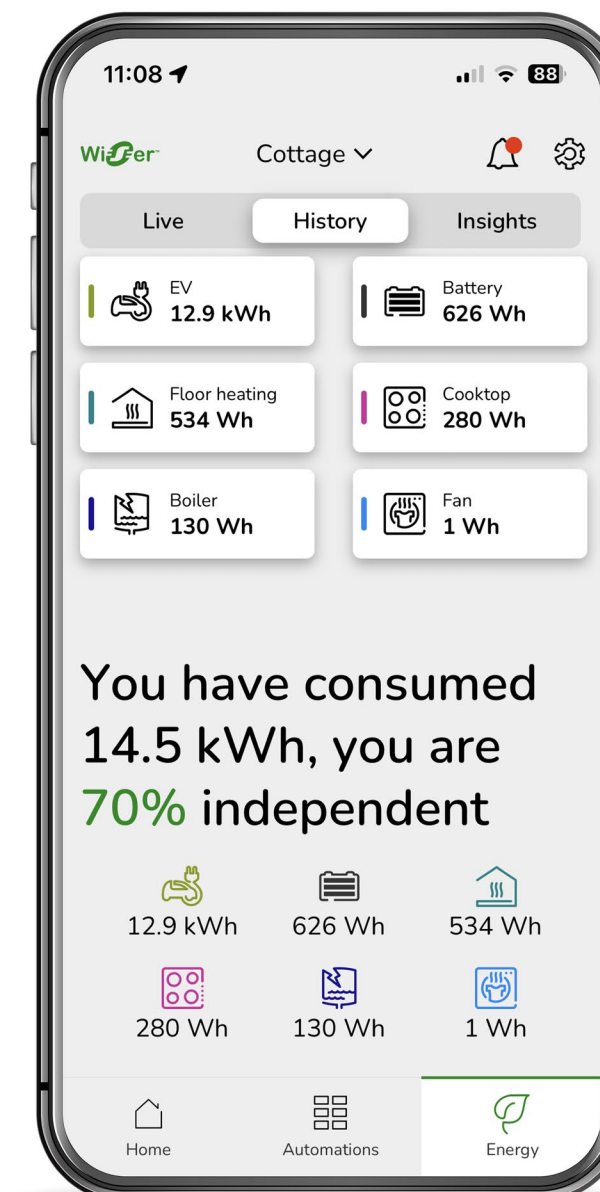
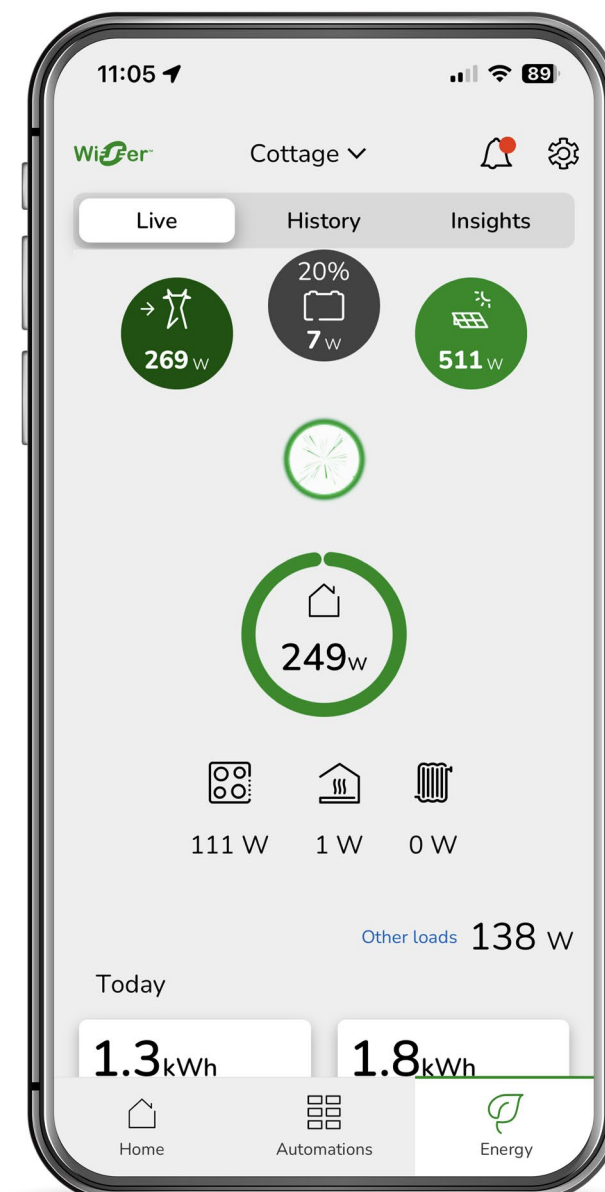
Make better-informed decisions

With just a tap on the app, you can check your energy usage per device in the current and previous months.



Smart energy monitoring

- Power flow with your energy consumption and production at anytime
- Energy history to see your energy consumption on a given date or period
- Tariff management to see your energy costs per product
- Insights on your grid dependency that will help you reduce your energy bill
- EVlink Pro AC charger support



Future-proof and long lasting

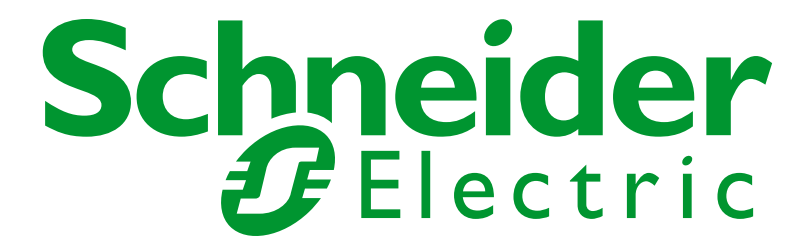
Choose a durable solution that evolves with your needs

Flexible and future proof

- Change your moments according to our needs
- Add new devices to your installation anytime
- Installing a photovoltaic system or getting an EV? Get the best out of it with the Wiser KNX energy features
- The Wiser KNX app is consistently being updated with the latest features answering to trends and innovations on the smart home market



Life Is On



To learn more information about the
Schneider Electric visit

se.com



Schneider Electric

35 rue Joseph Monier

92500 Rueil-Malmaison, France

Tel : +33 (0)1 41 29 70 00

